



social
tag me



Its open, its social and it's a whole lot of fun.

Packed with optional social media sharing features, you decide how far you want your event photos or gifs shared. Optional on site printing in either 4x6" or 2x6" photos ensures every guest leaves with a branded memento of your event.

*social
tagme*

HOW TO PLAY.



Strike a pose
for your Selfie



Link sent
instantly via
SMS or Email



Optional
Social Media
Sharing



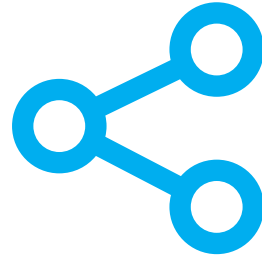
Optional
Instant
Printing



Packed Full of Features



Instant
Facebook
Brand Page
Upload



Enable
Sharing or
Keep Photos
Private



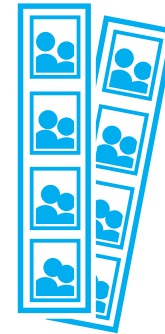
As Questions
or Capture
Data



Customise
Photo &
Gallery
Branding



Showcase
Photos on a
Live Feed



Multiple
Printing
Options

Live Gif Booth

Event
Photo
Creation
at its
Best



GIF Booth takes a series of still images and turns them into an animated GIF, ready to share to Facebook, Twitter, Instagram or Snapchat. More than entertainment, our GIF Booth produces highly shareable content that will drive your social media reach.



*social
tag*me

Packed Full of Features



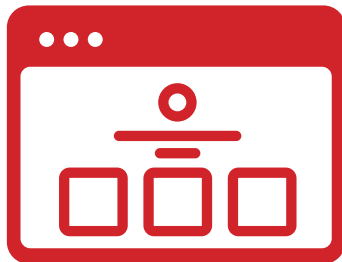
Share on
Facebook,
Twitter,
Instagram,or
Snapchat



Capture
Consumer
Data



Customise
SMS/Email
with Brand
Messages



Customise GIF
and Gallery
Branding



Showcase
Photos on a
Live Feed



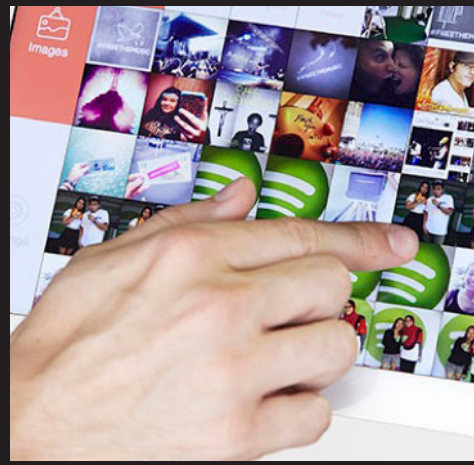
Provide
a digital
branded take
away

KEY FEATURES.



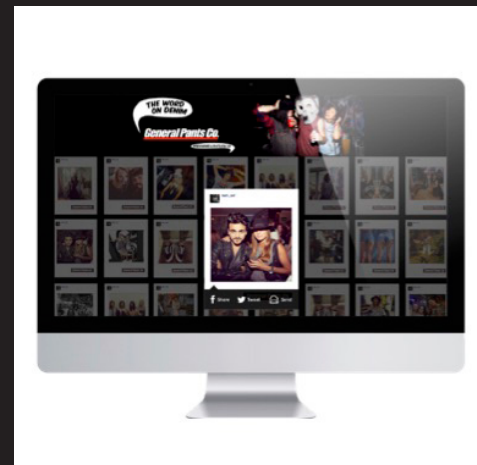
Branded Prints

Add your logo, messaging or promotional offers to every printed photo, creating a lasting branded memento.



Real Time Moderation

Protect your brand reputation or reprint your favourite photos for displaying at the event via our Live Moderation tool.

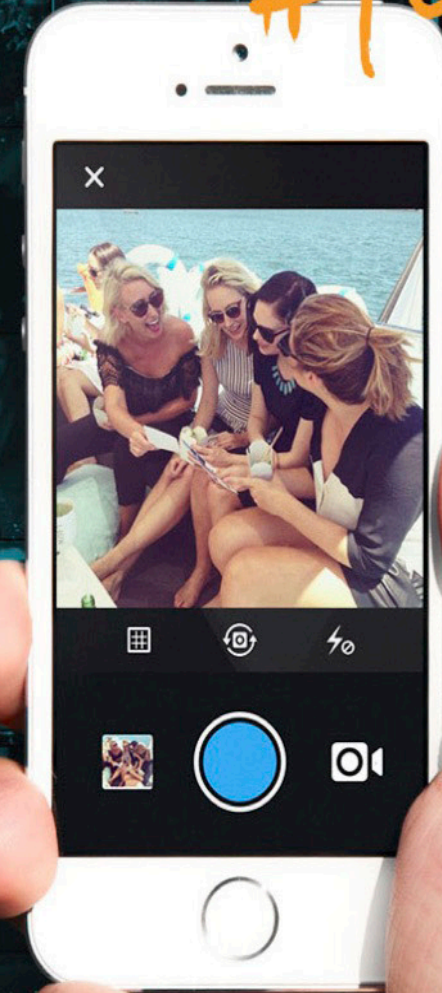


Digital Image Gallery

We'll provide you with a digital copy of all the photos so you can continue the conversation post-event.

LIVE INSTAGRAM FEED.

#feedme



social
tag me



#instadisplay

HOW TO PLAY.



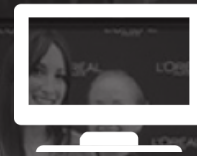
SNAP

Take a photo on any Instagram account



TAG

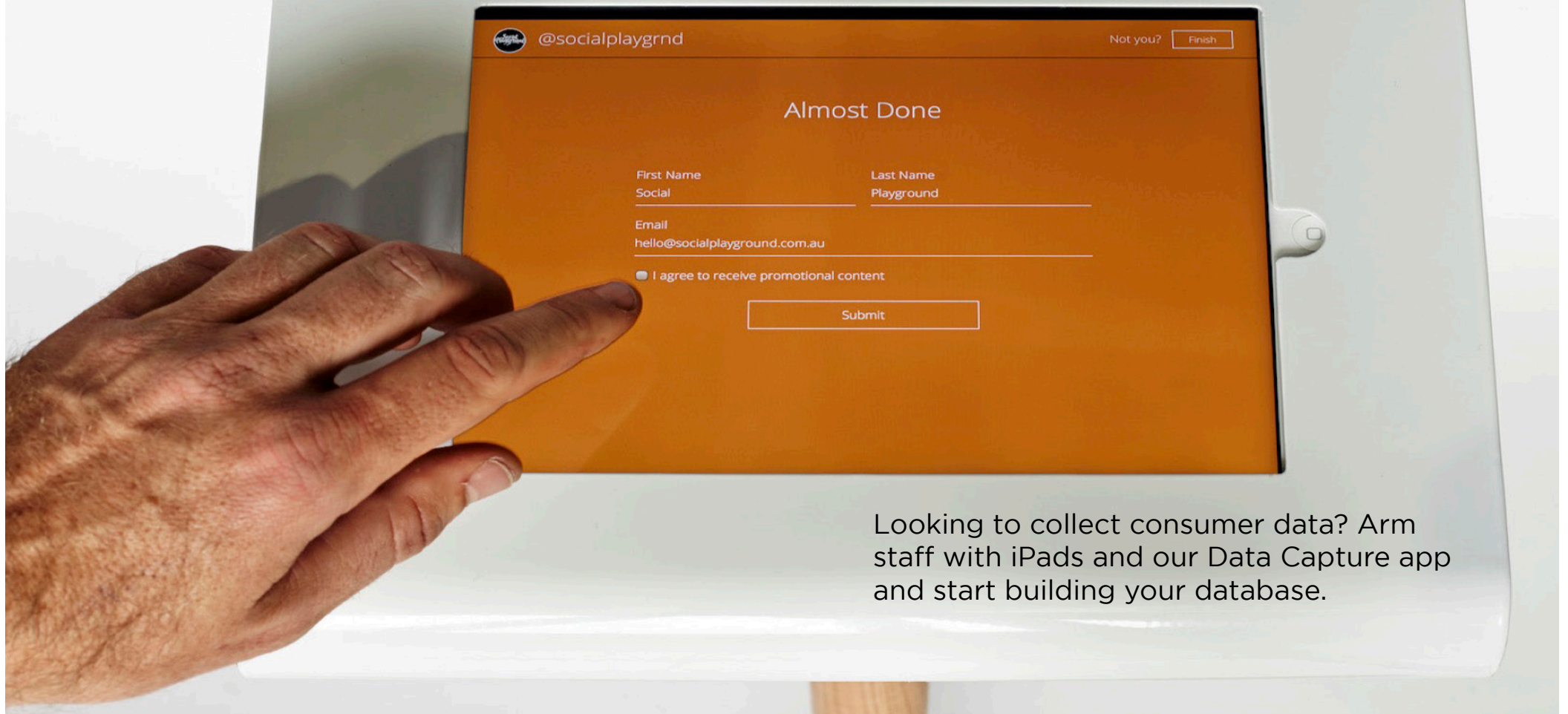
Add the event hashtag



STREAM

See the photo on the event screen, instantly

DATA CAPTURE.



The image shows a hand interacting with a tablet mounted on a white stand. The tablet screen displays a data capture form for '@socialplaygrnd'. The form has an orange background and includes fields for First Name, Last Name, and Email. A checkbox for 'I agree to receive promotional content' is also present, along with a 'Submit' button. The top of the screen shows the '@socialplaygrnd' logo and a 'Not you?' link with a 'Finish' button.

@socialplaygrnd

Not you? Finish

Almost Done

First Name
Social

Last Name
Playground

Email
hello@socialplayground.com.au

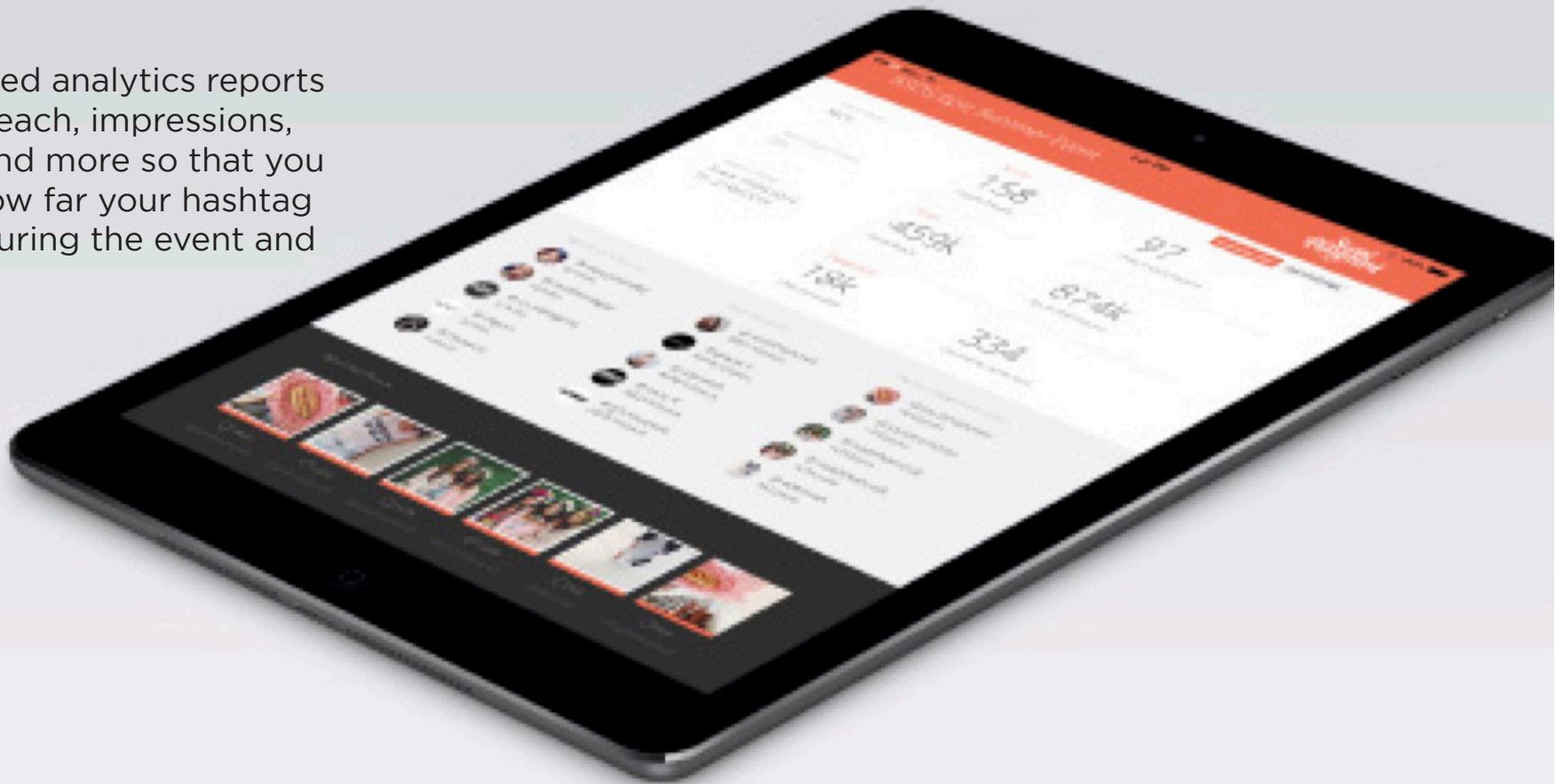
☐ I agree to receive promotional content

Submit

Looking to collect consumer data? Arm staff with iPads and our Data Capture app and start building your database.

INSIGHTS REPORTING.

We offer detailed analytics reports that measure reach, impressions, engagement and more so that you can monitor how far your hashtag has travelled during the event and beyond.



SETUP INFO & REQUIREMENTS.



Hashtag or Geolocation

Set a unique event hashtag or location and our printer will pull in all of the associated photos that users share to their own Instagram during the event.



Internet Connection

The Live Instagram Printer requires a stable Internet connection via Ethernet or WiFi. No connection? No problem - chat to us about our Internet solutions.



Print Speeds & Paper

Each photo takes less than 20 secs to print. Print up to 400 x 4x6" prints without replacing paper.



Power Supply

The setup runs off any standard AC 100-240V single power outlet.